



*Blinds with people in mind*

## WHISPER 3% & 5%

Roller Blind Fabric Specification

## WHISPER 3% & 5%

Roller Blind Fabric Specification

### KEY FEATURES:

<b>Fabric composition:</b>	78% PVC, 22% Polyester
<b>Fire retardancy:</b>	EN 13773 : 2003 Class 1, BS5867 - 2, Type B : 2008 for fire retardancy when tested in accordance with BS5438 : 1989
<b>Shading:</b>	Screen - Recommended for computer environments
<b>Moisture resistance:</b>	Recommended for moist conditions

### STANDARD SPECIFICATIONS:

<b>Colour range:</b>	4
<b>Louvre widths available:</b>	N/A
<b>Roller fabric width:</b>	250cm (98") nominal
<b>Typical fabric weight:</b>	3% - 485gsm (+/- 10) : 5% - 455gsm (+/- 10)
<b>Fabric thickness:</b>	0.66mm - nominal
<b>Colourfast:</b>	Conforms to BS5867 - 1 : 2004 for light fastness to Grade 6 minimum when tested in accordance with ISO 105 - B02 : 1999
<b>Care instructions:</b>	Wipe with damp sponge; Do not wash; Do not tumble dry; Do not dry clean; Do not iron

### Whisper 3%

COLOUR	HEAT		LIGHT		S-C
	T	R	T	R	
Black	4	18	6	16	0.72
Chalk	20	63	16	65	0.35
Linen	13	50	11	51	0.45
Silver	8	38	9	36	0.55

T = % Transmitted : R = % Reflected : S-C = Shading Co-efficient. Shading Co-efficients are expressed as a decimal between 0 and 1. The lower the figure, the higher the shading efficiency of the blind.

#### This data is based on:

Tests conducted using double glazed 6mm float glass with 12mm air space. Blinds are fully closed.

Shading Co-efficients are calculated for radiation at normal incidence. Standard U value is 2.75 W/M 2k = 0.49Btu/ft2hxF.

**Important:** Performance data has been compiled with great care using the latest techniques. However, it is advisable to check actual suitability of fabrics for a particular application before use.

In line with our commitment to product development, specifications may be subject to change without notice.

### Whisper 5%

COLOUR	HEAT		LIGHT		S-C
	T	R	T	R	
Black	7	18	8	18	0.72
Chalk	21	60	16	61	0.37
Linen	15	48	12	50	0.47
Silver	10	36	10	37	0.57

T = % Transmitted : R = % Reflected : S-C = Shading Co-efficient. Shading Co-efficients are expressed as a decimal between 0 and 1. The lower the figure, the higher the shading efficiency of the blind.



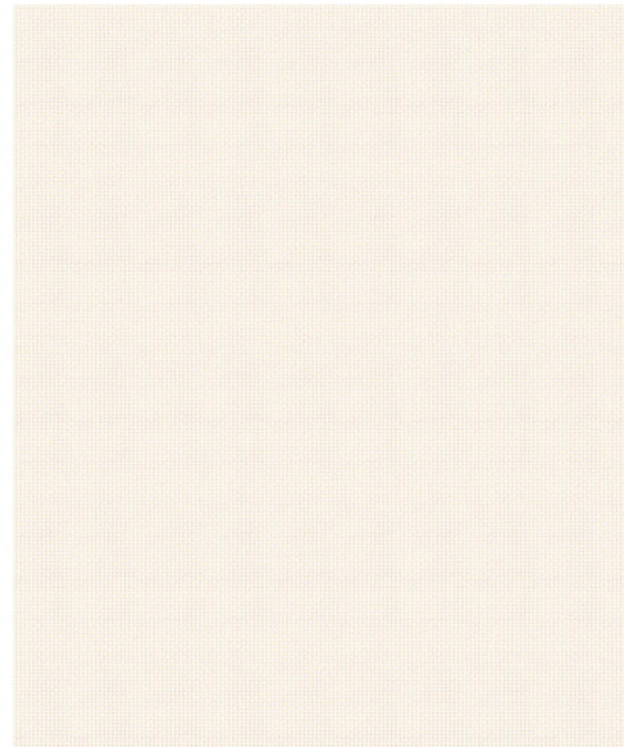


# WHISPER 3%

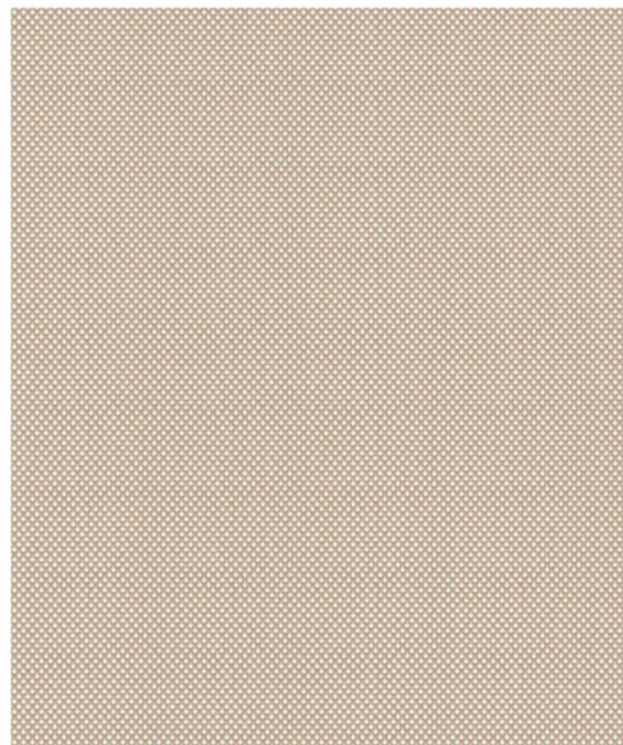
Roller Blind Fabric Specification



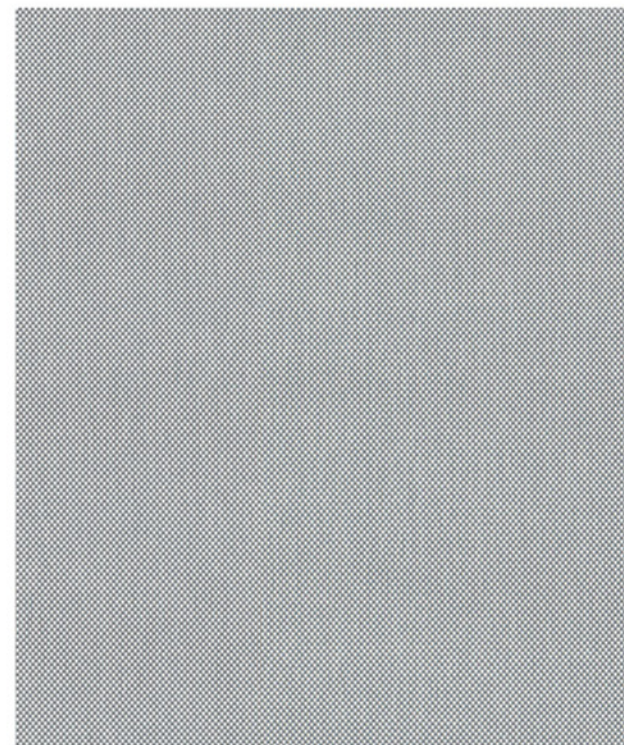
Black



Chalk



Linen



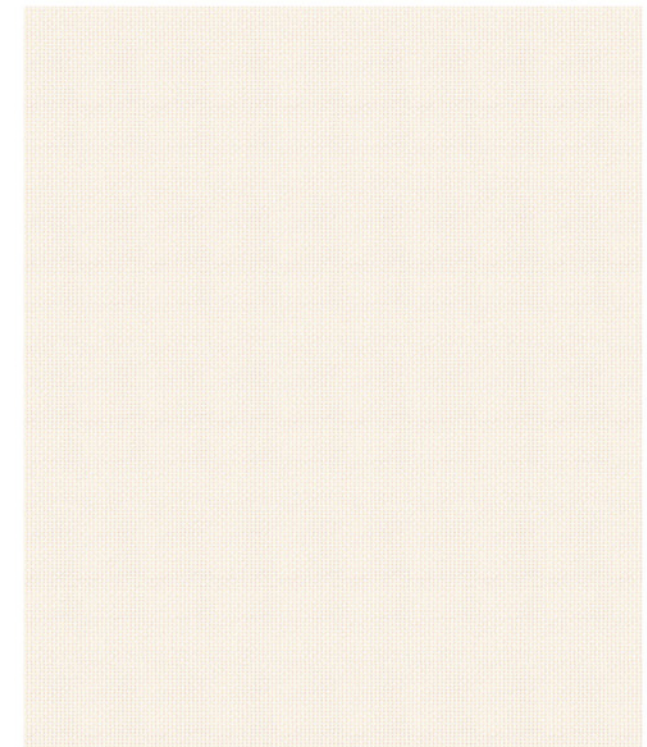
Silver

# WHISPER 5%

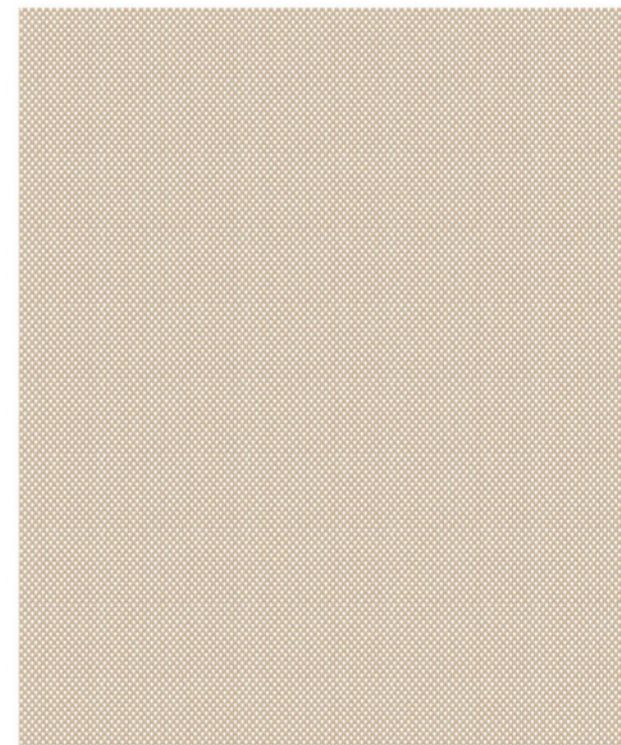
Roller Blind Fabric Specification



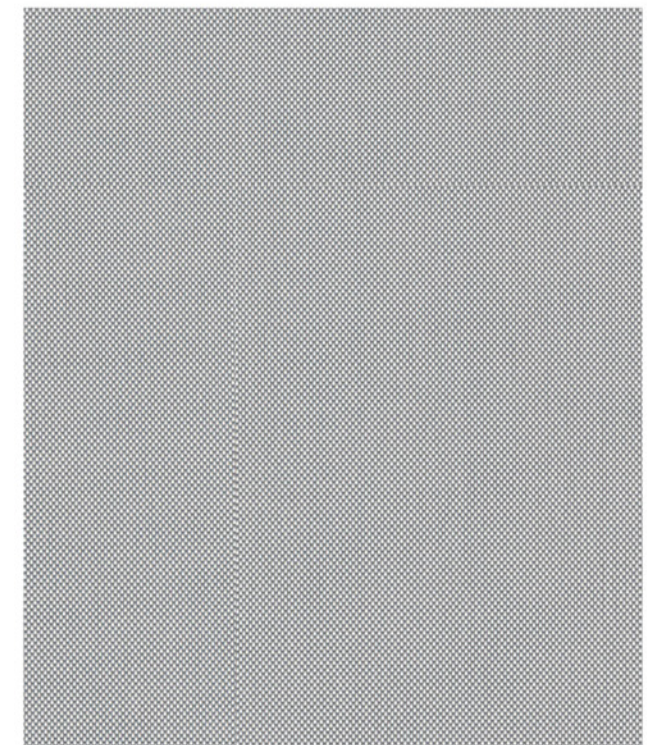
Black



Chalk



Linen



Silver